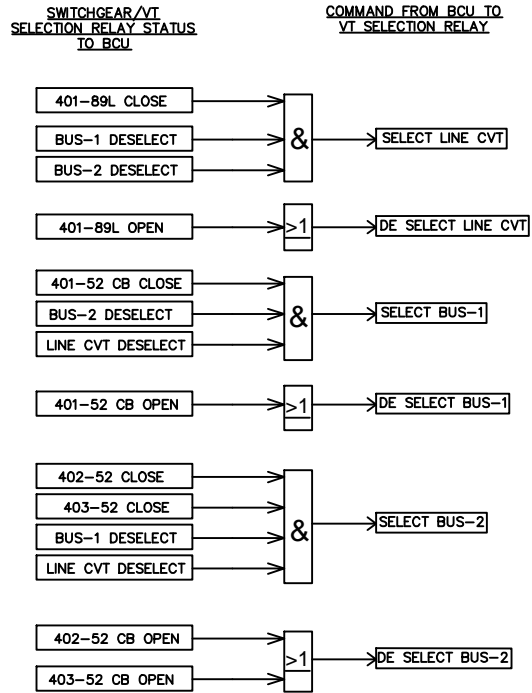
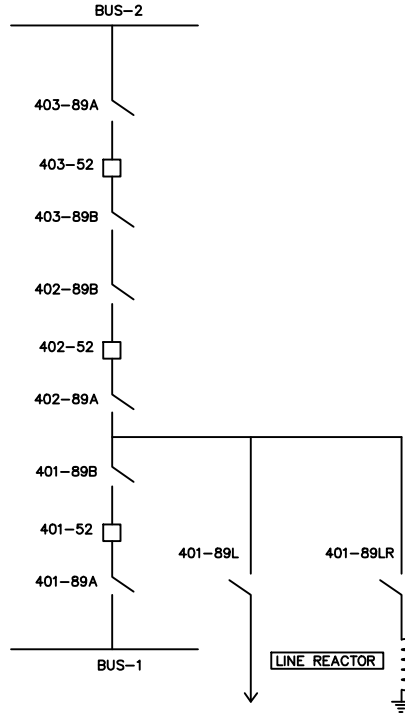


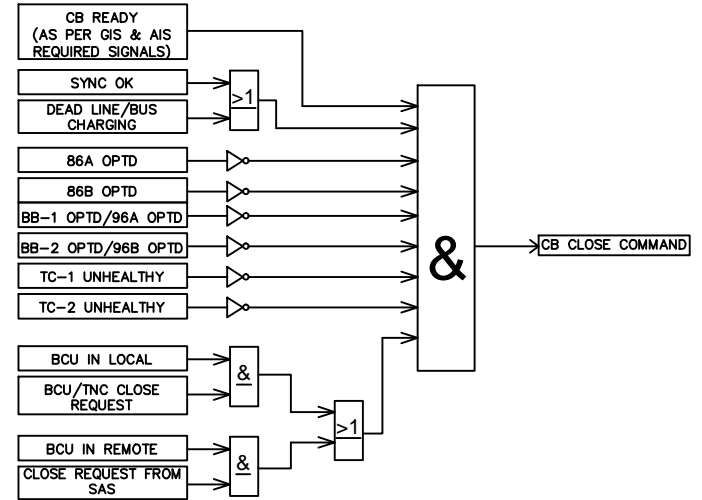
**VT SELECTION LOGIC IN BCU**



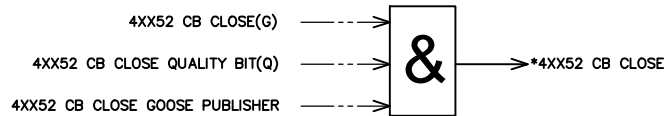
**EXAMPLE-400KV DIA**



**INDICATIVE CB CLOSE SOFTWARE INTERLOCK LOGIC IN BCU**



NOTE  
 1. ALL THE CB/ISOLATOR STATUS MUST BE DOUBLE POINT PROCESSED SIGNALS.  
 2. (\*) IF VIRTUAL INPUTS ARE UTILISED FOR SELECTION LOGIC THEN QUALITY & GOOSE PUBLISHER INPUTS MUST BE TAKEN FOR THE PROCESSING OF GOOSE SIGNALS.  
 SAMPLE LOGIC FOR "4XX52 CB CLOSE" SIGNAL IS SHOWN BELOW.



**INDICATIVE CB HARDWARE INTERLOCK LOGIC IN CRP**

